

TM 9-6650-212-34P

DEPARTMENT OF THE ARMY TECHNICAL MANUAL

DIRECT SUPPORT AND GENERAL SUPPORT MAINTENANCE

REPAIR PARTS AND SPECIAL TOOLS LIST

FOR

TELESCOPE, OBSERVATION M49 W/E

(6650-530-0960)

This publication has been printed by the
UNITED STATES ARMY PUBLICATIONS CENTER/
ST. LOUIS, MISSOURI, to meet your needs
on a timely basis.

HEADQUARTERS, DEPARTMENT OF THE ARMY

12 JULY 1971

TECHNICAL MANUAL }
 No. 9-6650-212-34P

HEADQUARTER,
 DEPARTMENT OF THE ARMY
 Washington, D.C. 12 July 1971

**DIRECT SUPPORT AND GENERAL SUPPORT MAINTENANCE
 REPAIR PARTS AND SPECIAL TOOLS LIST
 FOR
 TELESCOPE, OBSERVATION M49 W/E
 (6 6 5 0 - 5 3 0 - 0 9 6 0)**

This manual is current as of 21 June 1971.

	Paragraph	Pages
Section I. INTRODUCTION		
Scope	1	2
General	2	2
Explanation of columns	3	2
Special information	4	4
How to locate repair parts	5	4
Abbreviations	6	4
Federal supply codes for manufacturers	7	5
Reporting of errors	8	5
II. REPAIR PARTS FOR DIRECT SUPPORT, GENERAL SUPPORT, AND DEPOT MAINTENANCE		
Observation telescope M49-7578445-		7
Eyepiece assembly 5630787		9
Eyepiece assembly 6180758		11
Housing assembly 5630788		13
Shelf assembly 5630797		15
Objective assembly 6180756		17
Section III. SPECIAL TOOLS, TEST AND SUPPORT EQUIPMENT FOR DIRECT SUPPORT GENERAL SUPPORT, AND DEPOT MAINTENANCE		
Tripod and carrying cases		19
Tripod M15-6543811		21
Cradle assembly-7669716		23
Leg assembly-7689717		27
IV. INDEX-FEDERAL STOCK NUMBER AND REFERENCE NUMBER CROSS REFERENCE TO FIGURE AND ITEM NUMBER		28

*This manual supersedes those portions of ORD 8, F173 dated 4 Feb 54, including change and ORD 9, F173 dated 24 Jan 44, pertaining to Telescope M49 and Tripod M15.

LIST OF ILLUSTRATIONS

<i>Figure</i>	<i>Illustration</i>	<i>WE No</i>
1	Telescope observation M49	54691
2	Telescope observation M49	53975
3	Eyepiece assembly	53976
4	Eyepiece assembly	53977
5	Housing assembly	53978
6	Shelf assembly	53979
7	Objective assembly	53980
8	Tripod and carrying cases	53981
9	Tripod M15	33982
10	Cradle assembly	53983
11	Leg assembly	53984

Section I. INTRODUCTION

1. Scope.

This manual lists repair parts, special tools, and test equipment required for the performance of direct support, general support, and depot maintenance of the Telescope Observation M49.

2. General.

This Repair Parts and Special Tools List is divided into the following sections:

a. Repair Parts-Section II. A list of repair parts authorized for the performance of maintenance at the direct support, general support, and depot level, in figure and item number sequence.

b. Special Tools, Test and Support Equipment-Section III. A list of special tools, test and support equipment authorized for the performance of maintenance at the direct support, general support, and depot level.

c. Federal Stock Number and Reference Number Index-Section IV. A list of Federal Stock Numbers in ascending numerical sequence followed by a list of reference numbers in ascending alpha-numeric sequence, cross-referenced to the illustration figure number and item number.

3. Explanation of Columns.

The following provides an explanation of columns in the tabular lists in Section II and III.

a. Source, Maintenance, and Recoverability Codes (SMR), Column 1:

(1) Source code, indicates the selection status and source for the listed item. Source codes are:

<i>Code</i>	<i>Explanation</i>
P	Repair Parts, Special Tools, and Test Equipment supplied from the GSA/DSA, or Army supply system, and authorized for use at indicated maintenance categories.
P2	Repair Parts, Special Tools, and Test Equipment which are procured and stocked for insurance purposes because the combat or military essentiality of the end item dictates that a minimum quantity be available in the supply system.
P9	Assigned to items which are NSA design controlled: Unique repair parts, special tools, test, measuring and diagnostic equipment, which are stocked and supplied by the Army COMSEC Logistic System and which are not subject to the provisions of AR 380-41.
P10	Assigned to items which are NSA design controlled: Special tools, test, measuring and diagnostic equipment for COMSEC support, which are accountable under the provisions of AR 380-41, and which are stocked and supplied by the Army COMSEC Logistic System.
M	Repair Parts, Special Tools, and Test Equipment which are not procured or stocked, as such, in the supply system but are to be manufactured at indicated maintenance levels.
A	Assemblies which are not procured or stocked as such, but are made up of two or more units. Such component units carry individual stock numbers and descriptions, are procured and stocked separately and can be assembled to form the required assembly at indicated maintenance categories.
X	Parts and assemblies that are not procured or stocked because the failure rate is normally below that of the applicable end item or component. The failure of such part or assembly should result in retirement of the end item from the supply system.
X1	Repair Parts which are not procured or stocked. The requirement for such items will be filled by the higher assembly or component.
X2	Repair Parts, Special Tools, and Test Equipment which are not stocked and have no foreseen mortality. The indicated maintenance category requiring such repair parts will attempt to obtain the parts through cannibalization or salvage, if not obtainable through cannibalization or salvage, the item may be requisitioned with exc

Code Explanation
 tion data, from the end item manager, for immediate use.

G Major assemblies that are procured with PEMA funds for initial issue only as exchange assemblies at DSU and GSU level. These assemblies will not be stocked above the DS and GS level or returned to depot supply level.

Note: Cannibalization or salvage may be used as a source of supply for any items source coded above except those coded XI and aircraft support items as restricted by AR 700-42.

(2) Maintenance code, indicates the lowest category of maintenance authorized to install the listed item. The maintenance level codes are:

<i>Code</i>	<i>Explanation</i>
C	Crew or Operator Maintenance
O	Organizational Maintenance
F	Direct Support Maintenance
H	General Support Maintenance
D	Depot Maintenance

(3) Recoverability code, indicates whether unserviceable items should be returned for recovery or salvage. Items not coded are expendable. Recoverability codes are:

<i>Code</i>	<i>Explanation</i>
R	Applies to repair parts (assemblies and components) special tools and test equipment which are considered economically repairable at direct and general support maintenance levels. When the item is no longer economically repairable, It is normally disposed of at the GS level. When supply considerations dictate, some of these repair parts may be listed for automatic return to supply for depot level repair as set forth in AR 710-50. When so listed, they will be replaced by supply on an exchange basis.
S	Repair parts, special tools, test equipment and assemblies which are economically repairable at DSU and GSU activities and which normally are furnished by supply on an exchange basis. When items are determined by a GSU to be uneconomically repairable, they will be evacuated to a depot for evaluation and analysis before final disposition.
T	Higher dollar value recoverable repair parts, special tools, and test equipment which are subject to special handling and are issued on an exchange basis. Such items will be evacuated to the depot for overhaul or final disposition. Communications-Electronics and Missile Support Items will be repaired/overhauled only at depots.
U	Repair parts, special tools, and test equipment specifically selected for salvage by reclamation units because of precious metal content, critical materials, high dollar value, or reusable casings or castings.

b. Federal Stock Number, Column 2. This column indicates the Federal Stock number assigned to the item and will be used for requisitioning purposes.

c. Description, Column 3. This column indicates the Federal item name and any additional description of the item required. The abbreviation W/E, when used as a part of the nomenclature, indicates the Federal stock number includes all armament, equipment, accessories and repair parts issued with the item. A part number or other reference number is followed by the applicable five digit Federal supply code for manufacturers in parentheses.

d. Unit of Measure (U/M), Column 4. A 2 character alphabetic abbreviation indicating the amount or quantity of the item upon which the allowances are based e.g., ft, ea, pr, etc.

e. Quantity Incorporated in Unit, Column .5. This column indicates the quantity of the item used in the assembly or the portion illustrated. A "V" appearing in this column in lieu of a quantity indicates that a definite quantity cannot be indicated e.g., shims, spacers, gaskets; etc.

f. 30-Day DS/GS Maintenance Allowances, Columns 6 and 7.

Note. Allowances in GS column are for GS maintenance only.

(1) The allowance columns are divided into three subcolumns. Indicated in each subcolumn, opposite the first appearance of each item, is the total quantity of items authorized for the number of equipments supported. Subsequent appearances of the same item will have the letters "REF" in the applicable allowance columns. Items authorized for use as required but not for initial stockage are identified with an asterisk in the allowance column.

(2) The quantitative allowances for DS/GS levels of maintenance will represent initial stockage for a 30-day period for the number of equipments supported.

(3) Determination of the total quantity of parts required for maintenance of more than 100 of these equipments can be accomplished by converting the equipment quantity to a decimal factor by placing a decimal point before the next

to last digit of the number to indicate hundredths, and multiplying the decimal factor by the parts quantity authorized in the 51-100 allowance column. Example, authorized allowance for 51-100 equipment is 40; for 150 equipments multiply 40 by 1.50 or 60 parts required.

g. 1-Year Allowances Per 100 Equipments/Contingency Planning Purposes, Column 8. This column indicates opposite the first appearance of each item the total quantity required for distribution and contingency planning purposes. The range of items indicates total quantities of all authorized items required to provide for adequate support of 100 equipments for one year.

h. Depot Maintenance Allowance Per 100 Equipments, Column 9. This column indicates opposite the first appearance of each item, the total quantity authorized for depot maintenance of 100 equipments. Subsequent appearances of the same item will have the letters "REF" in the allowance column. Items authorized for use as required but not for initial stockage are identified with an asterisk in the allowance column.

i. Illustration, Column 10. This column is divided as follows:

(1) *Figure number, column 10a.* Indicates the figure number of the illustration in which the item is shown.

(2) *Item number, Column 10b.* Indicates the callout number used to reference the item in the illustration.

4. Special Information.

a. Action change codes indicated in the left hand margin of the listing page denote the following

N-Indicates an added item not included in previous publications.

C-Indicates a change in data.

F-Indicates a change in FSN only.

b. To maintain disassembly sequence in this manual, a sequence number in parentheses will be displayed immediately to the right of the callout number on the illustration.

5. How to locate Repair Parts.

a. When Federal Stock number or reference number is unknown:

(1) *First.* Using the table of contents determine the assembly group, within which the repair part belongs. This is necessary since illustrations are prepared for assembly groups and listings are divided into the same groups.

(2) *Second.* Find the illustration covering the assembly group to which the repair part belongs.

(3) *Third.* Identify the repair part on the illustration and note the illustration figure and item number of the repair part.

(4) *Fourth.* Using the Repair Parts Listing, find the assembly group to which the repair part belongs and locate the illustration figure and item number noted on the illustration.

b. When Federal Stock number or reference number is known:

(1) *First.* Using the Index of Federal Stock Numbers and Reference Numbers find the pertinent Federal stock number or reference number. This index is in ascending FSN sequence followed by a list of reference numbers in ascending alpha-numeric sequence, cross-referenced to the illustration figure number and item number.

(2) *Second.* Using the Repair Part Listing, find the assembly group of the repair part and the illustration figure number and item number referenced in the Index of Federal Stock Numbers and Reference Numbers.

6. Abbreviations.

<i>Abbreviation</i>	<i>Explanation</i>
al.....	aluminum
aly.....	alloy
andz.....	anodize
ax.....	axial
bfl.....	back focal length
brz.....	bronze
cd pl.....	cadmium plate
cham.....	chamfer
cp.....	cone point
cres.....	corrosion resistant steel
crm.....	chrome
csk.....	countersunk
da.....	digital-to-analog
devn.....	deviation
dia.....	diameter
dr.....	drive
efl.....	effect focal length
equiv.....	equivalent
et.....	edge thickness

<i>Abbreviation</i>	<i>Explanation</i>
filh	fillister head
tl	flat
tnsh	finish
gl	gloss
hex	hexagon
hd	head
id	Inside diameter
intl	Initial
l	long
min	minimum
mtg	mounting
nc	national coarse
nf	national fine
no	number
OA	over-all
od	outside diameter
ph	phase
pld	plated
plstc	plastic
pnh	pan head
por	porro
porm	plus or minus
psm	prism
psvt	passivate
rec	recess
rnd	round
ns	national special
stl	steel
T	teeth
thd	thread
thk	thick
unc	unified coarse thread

<i>Abbreviation</i>	<i>Explanation</i>
unctd	uncoated
unf	unified fine thread
w	wide

7. Federal Supply Codes for Manufacturers.

Code	Manufacturer
00000	Ordnance Corps
19200	Frankford Arsenal Philadelphia, Pa. 19137
24150	Ordnance Corps, Engineering Standards, Rock Island Arsenal Rock Island, Illinois
96906	Military Standard Promulgated by Standardization Division, Directorate of Logistic Services, DSA

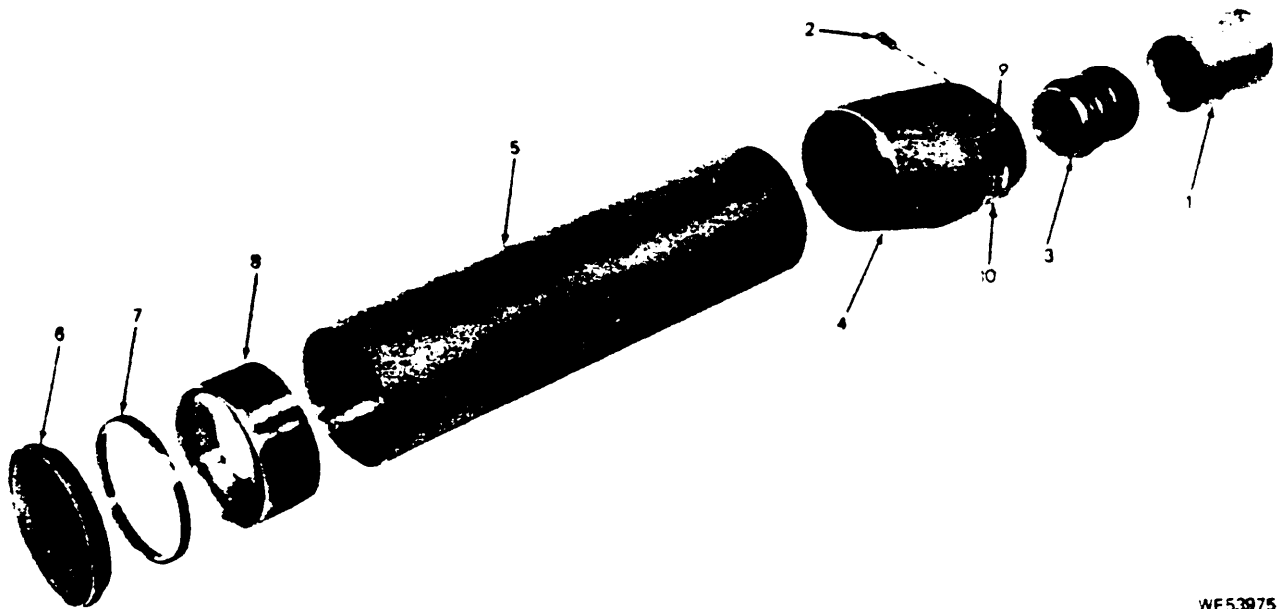
8. Reporting of Errors.

Report of errors, omissions, and recommendations for improving this publication by the individual user is encouraged. Reports should be submitted on DA Form 2028 (Recommended Changes to DA Publications) and forwarded direct to the Commanding Officer, Frankford Arsenal, ATTN: AMSWE-MAF-W3100, Philadelphia, Pa. 19137.



WE 54691

Figure 1. Telescope observation M49

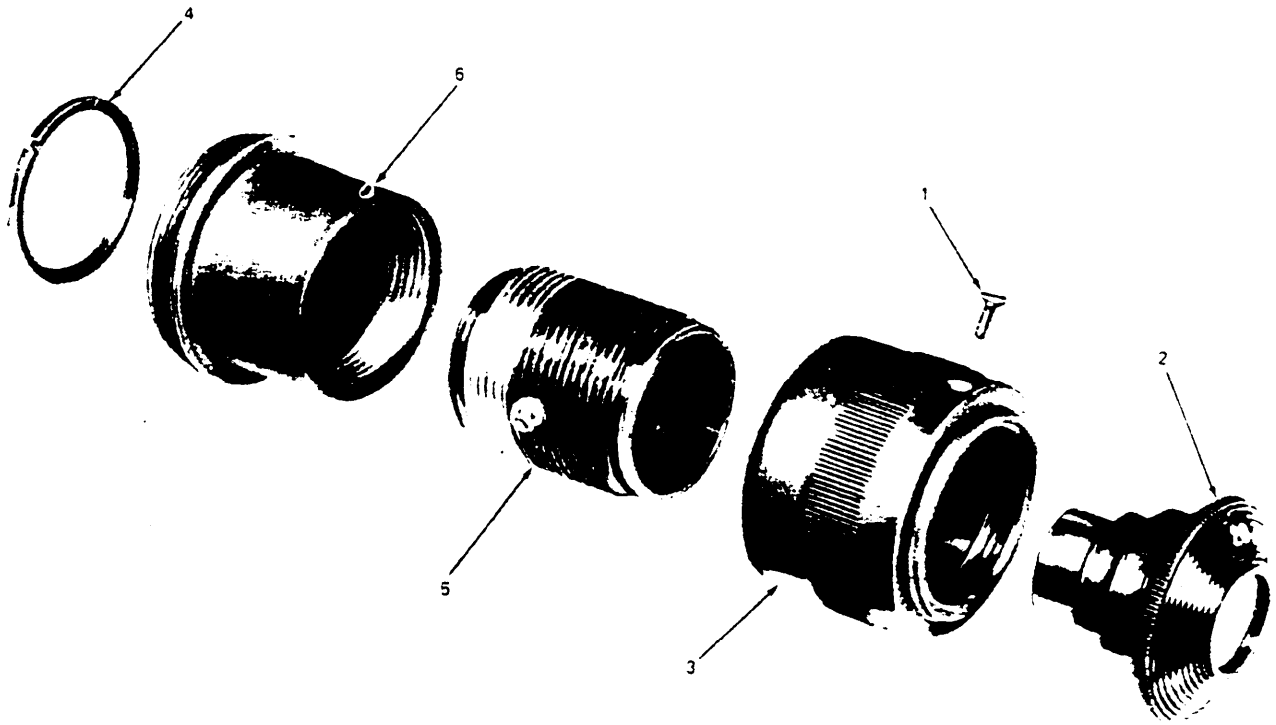


WE53975

Figure 2. Telescope observation M49

SECTION II REPAIR PARTS FOR DIRECT SUPPORT, GENERAL SUPPORT
AND DEPOT MAINTENANCE

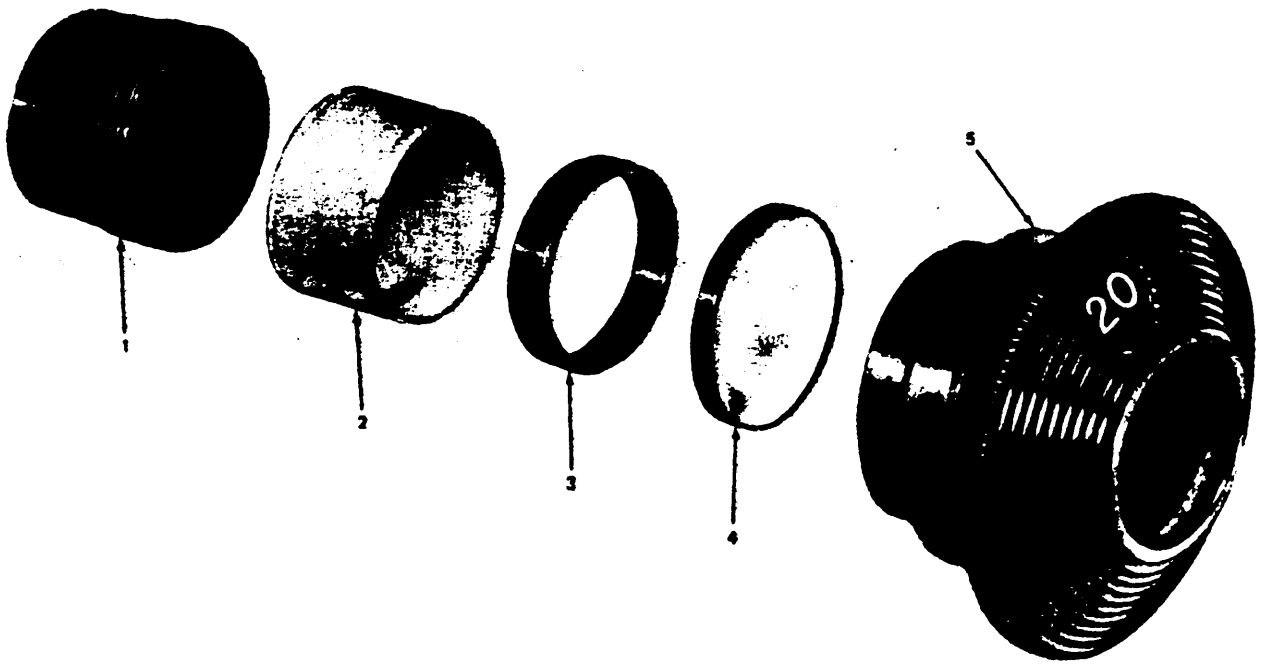
ACT ON CODE	(1) SMR RECOV CODE	(2) FEDERAL STOCK NO	(3) DESCRIPTION REFERENCE NUMBER & MFR CODE	(4) UNIT OF MEAS	(5) QTY INC IN UNIT	(6) 30-DAY DS MAINT ALLOWANCE			(7) 30-DAY GS MAINT ALLOWANCE			(8) 1- YR ALW PER 100 EQUIP CNTGCY	(9) DEPOT MAINT ALW PER 100 EQUIP	(10) ILLUSTRATION	
						(A)	(B)	(C)	(A)	(B)	(C)			(A)	(B)
(A)SOURCE (B)MAINT (C)RECOV				USABLE ON CODE		1-20	21-50	51-100	1-20	21-50	51-100			FIG NO	ITEM NO
			OBSERVATION TELESCOPE, M497578445												
C	P-	O-	6650-531-7039 CAP EYEPIECE COVER AL, 2-3/8 THK, 1-5/8 ID 5317039 (19200)	EA	1	1	1	2	1	1	2	24	10	2	1
C	P-	H-	5305-282-7668 SETSCREW HDLS CP, CRES. NO 5-44 NG-2A, 5/321 540977 (21450)	EA	1				1	2	3	36	20	2	2
N	A-	H-	EYEPIECE ASSEMBLY 5630787 (19200)		1									2	3
N	X-	-	HOUSING ASSEMBLY 5630788 (19200)		1									2	4
N			TUBE 5317040 (19200)					1						2	5
C	P-	O-	6650-531-7041 COVER AL, 2 ID, 2-5/8 OD, 13/32 THK 5317041 (19200)	EA	1	1	1	2	1	1	2	24	10	2	6
C	P-	H-	5340-597-8878 RING, RETAINING AL-ALY, 2.424-24 NS-2 OD, 3/16 THK 5317042 (19200)	EA	1				1	1	2	24	10	2	7
N	A-	H-	OBJECTIVE ASSEMBLY 6180756 (19200)		1									2	8
N	P-	H-	5305-253-5606 SCREW, DRIVE RND, HD, STL, CD PL, NO 0.073 1/8 1 MS21318-7 (96906)	EA	2				1	2	3	36	20	2	9
C	P-	D-	6650-205-0910 PLATE IDENTIFICATION AL, 13/16 W, 0.025 THK, 1-3/4 LW/2 MTG HOLES 7579624 (19200)	EA	1	5								2	10



WE53976

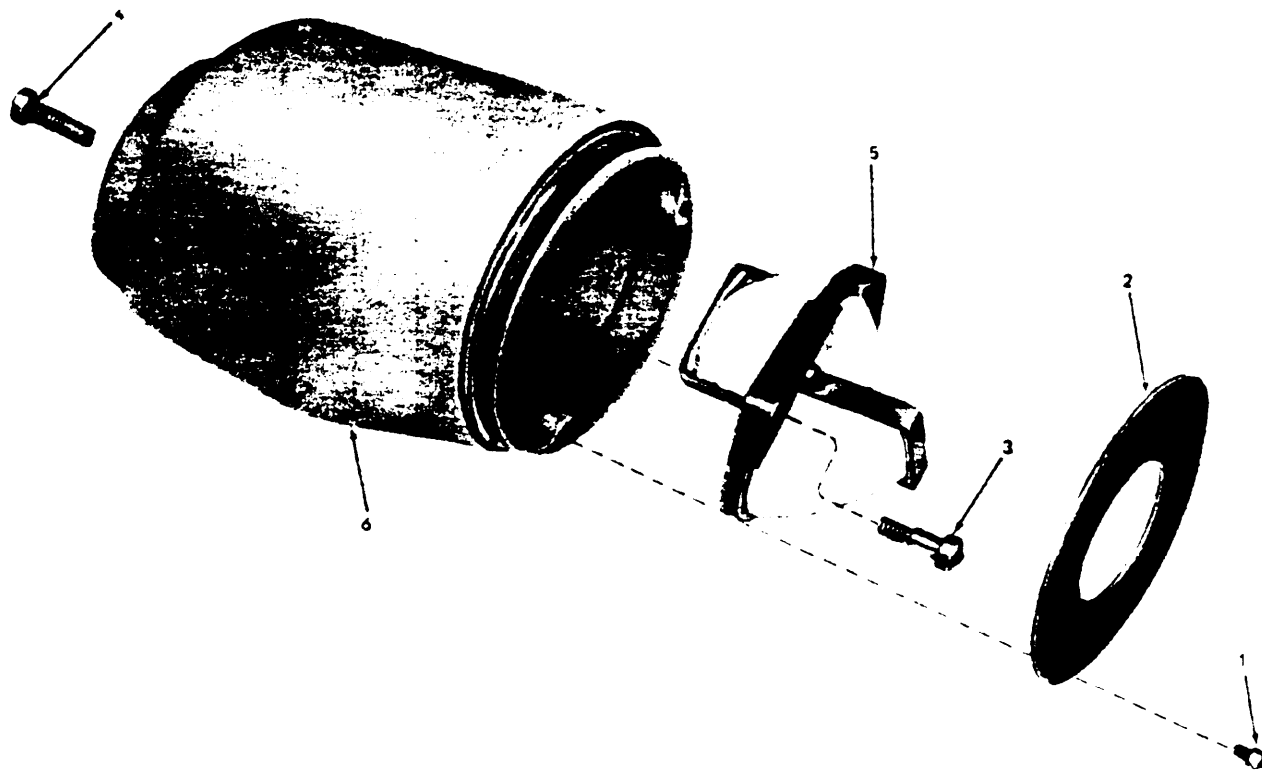
Figure 3. Eyepiece assembly

ACT ON CODE	SMR RECOV CODE	(1) FEDERAL STOCK NO	(2) FEDERAL STOCK NO	(3) DESCRIPTION	(4) UNIT OF MEAS	(5) QTY IN UNIT	(6) 30-DAY DS MAINT ALLOWANCE			(7) 30-DAY GS MAINT ALLOWANCE			(8) 1- YR ALW PER 100 EQUIP CNTGCTY	(9) DEPOT MAINT ALW PER 100 EQUIP	(10) ILLUSTRATION	
							(A)	(B)	(C)	(A)	(B)	(C)			(A)	(B)
		(A)SOURCE (B)MAINT (C)RECOV		REFERENCE NUMBER & MFR CODE	USABLE ON CODE		1-20	21-50	51-100	1-20	21-50	51-100			(A) FIG NO	(B) ITEM NO
				EYEPIECE ASSEMBLY 5630787												
N	P-	H-	5305-764-2964	SCREW, MACHINE FL CSK:, CROSS REC, NO 2-56NC-2A, 5/161 MS51959-4 (96906)	EA	1				1	1	2	24	10	3	1
N	A-	H-		EYEPIECE ASSEMBLY 6180758 (19200)		1									3	2
C	P-	H-	6650-531-7071	SLEEVE AL, 1.605 DIA, 1.1521 5317071 (19200)	EA	1				1	1	2	24	10	3	3
N	P-	H-	5310-208-3434	NUT, PLAIN ROUND 1.28 DIA, .105 THK 5317069 (00000)	EA	1				*	1	1	12	4	3	4
C	P-	H-	6650-531-7068	SLEEVE AL, 1.231 DIA, 1.431 1 5317068 (19200)	EA	1				*	1	1	12	4	3	5
C	P-	H-	6650-531-7070	ADAPTER AL, 1.686 OD, 1.255 1 5317070 (19200)	EA	1				*	1	1	12	4	3	6



WE53977

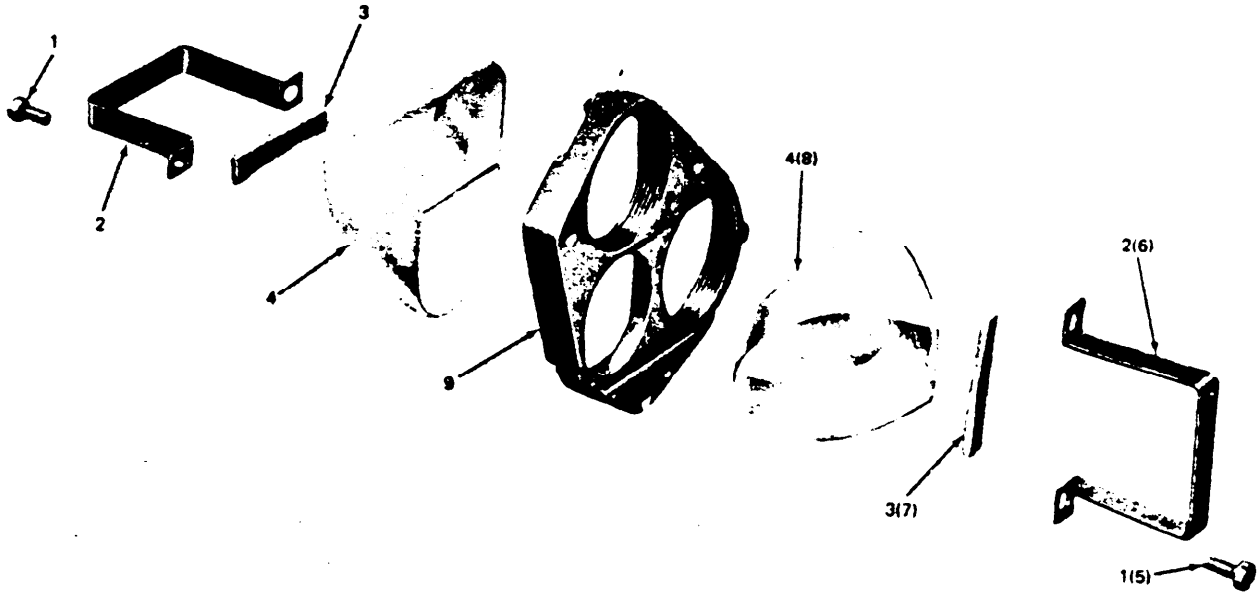
ACT ON CODE	(1) SMR RECOV CODE	(2) FEDERAL STOCK NO	(3) DESCRIPTION	(4) UNIT OF MEAS	(5) QTY INC IN UNIT	(6) 30-DAY MAINT ALLOWANCE			(7) 30-DAY GS MAINT ALLOWANCE			(8) 1- YR ALW PER 100 EQUIP CNTGCV	(9) DEPOT MAINT ALW PER 100 EQUIP	(10) ILLUSTRATION		
						(A)	(B)	(C)	(A)	(B)	(C)			(A)	(B)	
						1-20	21-50	51-100	1-20	21-50	51-100			FIG NO	ITEM NO	
			EYEPiece ASSEMBLY 6180758													
N	P-	H-	1240-531-7065	RETAINER, OPTICAL ELEMENT AL ALY, 0.672-40 NS-2 OD, 0.487 1 5317065 (19200)	EA	1		*	1	12	4			4	1	
C	P-	H-	6650-531-6907	LENS FIELD 5316907 (19200)	EA	1		1	1	2	24	10		4	2	
C	P-	H-	6650-531-7066	SEPARATOR AL-ALY, 0.547 ID, 0.634 OD, 0.165 THK 5317066 (19200)	EA	1		1	1	2	24	10		4	3	
C	P-	H-	1240-531-6906	EYELENS GL, 0.634 DIA, 0.74 ET 0.317 AXIAL THK, 1.035 EQUIV FL, 0.093 BFL 5316096 (19200)	EA	1		1	1	2	24	10		4	4	
C	P-	H-	6650-618-0759	CELL, EYEPiece 6180759 (19200)	EA	1		*	1	1	12	4		4	5	



WE53078

Figure 5. Housing assembly

ACT ON CODE	SMR RECOV CODE	(1)	(2)	(3)	(4)	(5)	(6)	(7)			(8)		(9)		(10)	
								30-DAY GS MAINT ALLOWANCE			1- YR ALW PER 100 EQUIP		DEPOT MAINT PER 100 EQUIP		ILLUSTRATION	
(A)SOURCE (B)MAINT (C)RECOV			REFERENCE NUMBER & MFR CODE	USABLE ON CODE	UNIT OF MEAS	QTY IN UNIT	INC DS	(A)	(B)	(C)	(A)	(B)	(C)	(A)	(B)	FIG NO ITEM NO
HOUSING ASSEMBLY 5630788																
C	P-	H-	5305-207-8851	SCREW, MACHINE FILH, SLOT DR, CRES, NO 4-36NS-2A, 1/8 1 5317091 (00000)	EA	3		1	2	3	36	20	5	1		
C	P-	H-	5330-297-5627	DIAPHRAGM, 1.02 ID, 2.34 OD, 0.31 THK 5317092 (00000)	EA	1		*	1	1	12	5	5	2		
C	P-	H-	5305-207-8849	SCREW, MACHINE FILH, SLOT DR, CRES, NO 8-32NC-2A, 15/32 1 5317093 (00000)	EA	2		1	2	3	36	20	5	3		
N	P-	H-	5305-054-6670	SCREW, MACHINE NO 8-32NC-2A, 1/2 1 MS51957-45 (96906)	EA	1		1	2	3	36	20	5	4		
N	A-	H-		SHELF ASSEMBLY 5630797 (19200)		1							5	5		
I	X-	-		HOUSING, PORRO PRISM 5630789 (19200)		1							5	6		



WE53979

Figure 6. Shelf assembly

ACT ON CODE	(1) SMR RECOV CODE	(2) FEDERAL STOCK NO	(3) DESCRIPTION	(4) UNIT OF MEAS	(5) QTY INC IN UNIT	(6) 30-DAY DS MAINT ALLOWANCE			(7) 30-DAY GS MAINT ALLOWANCE			(8) 1- YR ALW PER 100 EQUIP CNTGCY	(9) DEPOT MAINT ALW PER 100 EQUIP	(10) ILLUSTRATION	
						(A)	(B)	(C)	(A)	(B)	(C)			(A)	(B)
(A)SOURCE (B)MAINT (C)RECOV		REFERENCE NUMBER & MFR CODE		USABLE ON CODE		(A)	(B)	(C)	(A)	(B)	(C)			(A) FIG NO	(B) ITEM NO
			SHELF ASSEMBLY 5630797												
N	P-	H-	5305-022-4683 SCREW MACHINE FILH CRES, NO 3-48NC-2A, 3/16 1 224683 (00000)	EA	4				1	2	3	36	20	6	1
N	P-	H-	5340-531-7094 STRAP, RETAINING PH BRZ, 3/16 W, 1-3/8 1, 0.25 THK 5317094 (00000)	EA	2				1	2	3	36	20	6	2
C	P-	H-	1240-531-7095 PAD, CUSHIONING PLSTC, 3/32 OA W, 1/16 OA THK, 5/8 1 5317095 (19200)	EA	2				2	3	5	60	40	6	3
C	P-	H-	6650-618-0726 PRISM, OPTICAL INSTRUMENT GL, FOR FSM, 90 DEGREES FORM, 12 MIN LT 12 MIN IT DEVN 6180726 (19200)	EA	2				1	2	3	36	20	6	4
C	P2-	H-	6650-563-0798 SHELF, PORRO PRISM 5630798 (19200)	EA	1				*	*	*	12	2	6	9

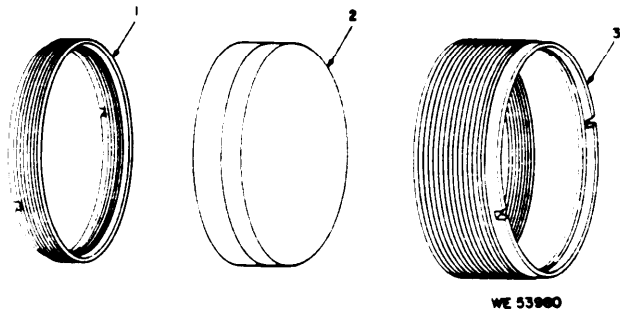
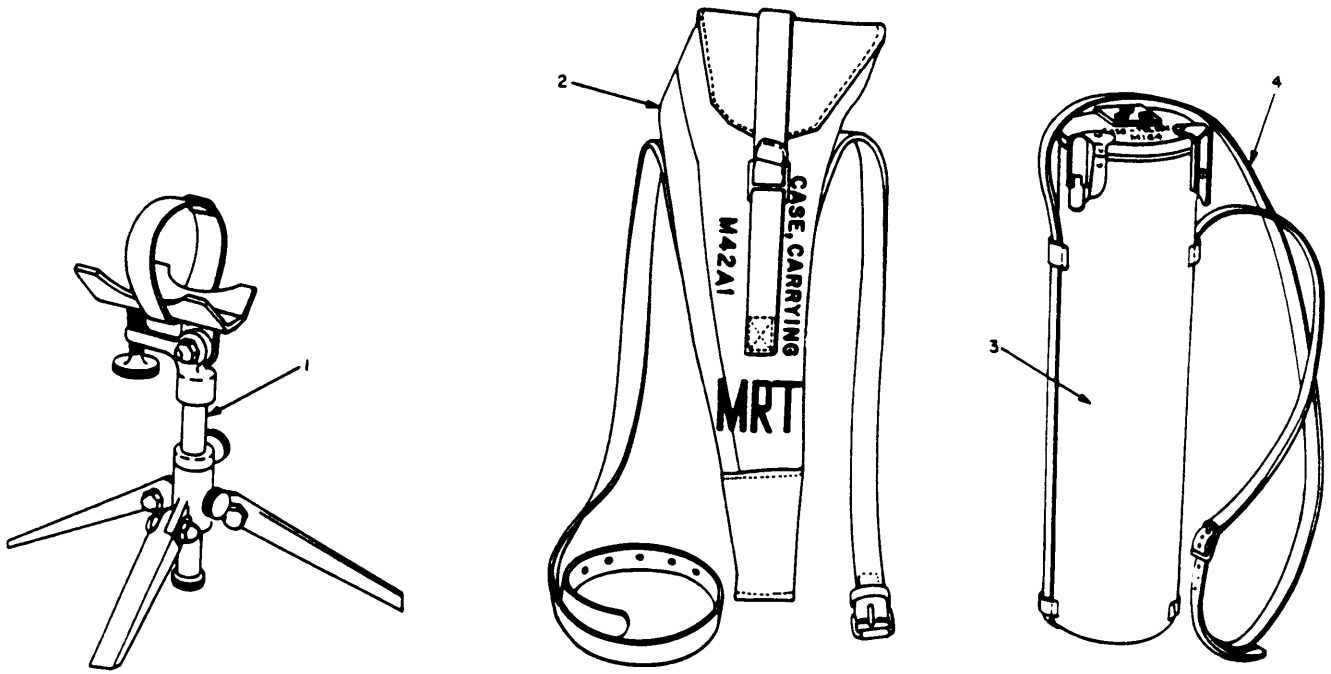


Figure 7. Objective assembly

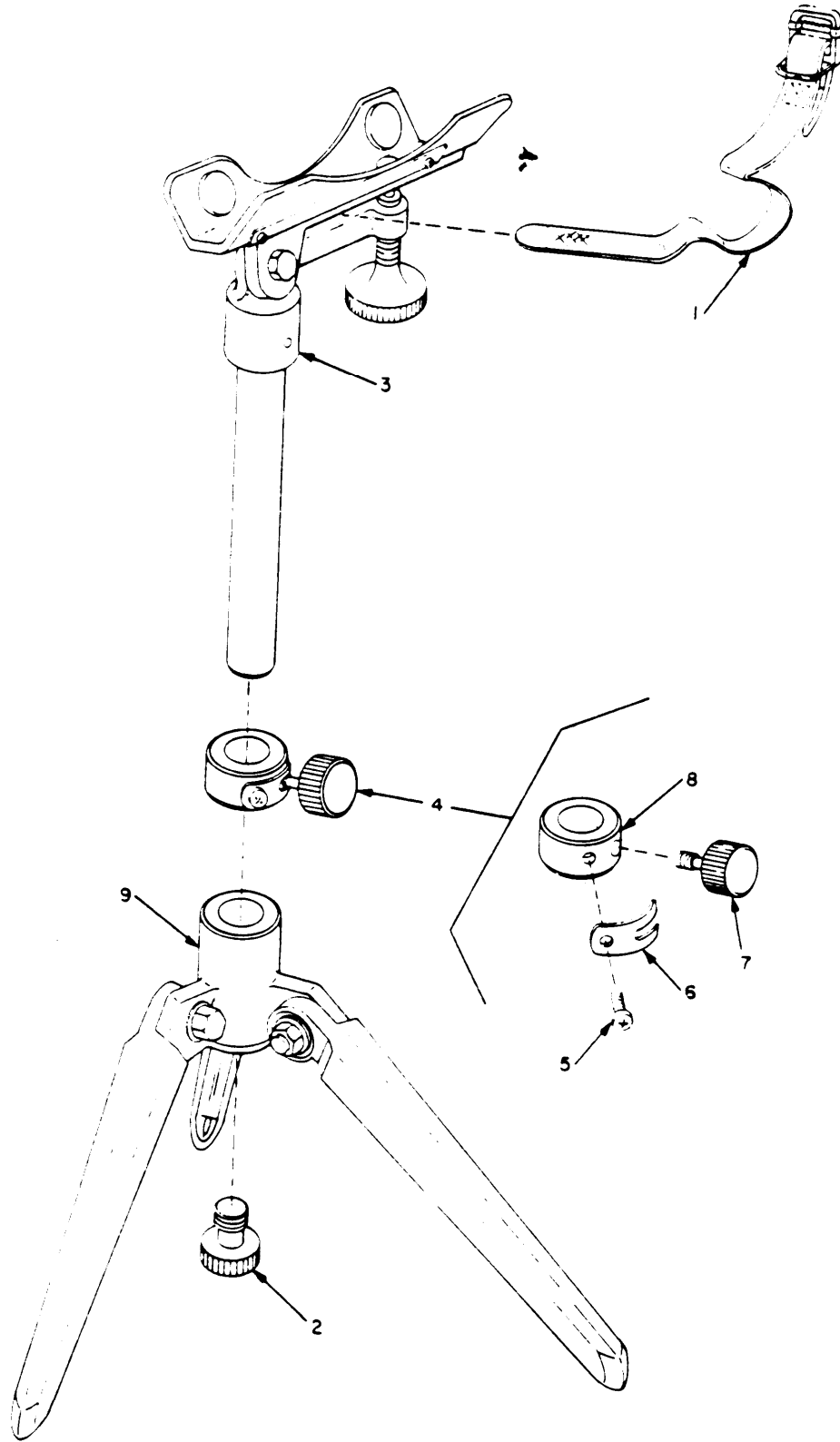


WE 53981

Figure 8. Tripod and carrying cases

TM9-6650-212-34P
SECTION III. SPECIAL TOOLS, TEST AND SUPPORT EQUIPMENT
FOR DIRECT SUPPORT, GENERAL SUPPORT AND DEPOT MAINTENANCE

ACT ON CODE	SMR RECOV CODE	(1) SOURCE	(2) MAINT	(3) RECOV	(2) FEDERAL STOCK NO	(3) DESCRIPTION REFERENCE NUMBER & MFR CODE	(4) USABLE ON CODE	(5) UNIT OF MEAS	(6) 30-DAY MAINT ALLOWANCE			(7) 30-DAY GS MAINT ALLOWANCE			(8) 1- YR ALW PER 100 EQUIP CNTGCY	(9) DEPOT MAINT ALW PER 100 EQUIP	(10) ILLUSTRATION	
									(A) 1-20	(B) 21-50	(C) 51-100	(A) 1-20	(B) 21-50	(C) 51-100			(A) FIG NO	(B) ITEM NO
TOOLS AND EQUIPMENT																		
C	P-	C-	R-		1240-654-3811	EQUIPMENT TRIPOD, M15 6543811 (19200)	EA	1	*	1	1	*	1	1	12	4	8	1
C	P-	C-			6650-310-2534	CASE, CARRYING, M42A1 8244518 (19200)	EA	1	1	1	2	1	1	2	24	10	8	2
C	P-	C-			6650-871-2970	CASE, TELESCOPE, M164 8270828 (19200)	EA	1	*	1	1	*	1	1	12	4	8	3
C	P-	F-			5340-561-0313	REPAIR PARTS FOR EQUIPMENT CASE, TELESCOPE M164 STRAP, COTTON WEBBING 7644089 (19200)	EA	1	1	1	2	1	1	2	24		8	4



WE 53982

Figure 9. Tripod, M15

ACT ON CODE	SMR RECOV CODE	(1) FEDERAL STOCK NO	(2) FEDERAL STOCK NO	(3) DESCRIPTION	(4) UNIT OF MEAS	(5) QTY IN UNIT	(6) 30-DAY DS MAINT ALLOWANCE			(7) 30-DAY GS MAINT ALLOWANCE			(8) 1- YR ALW PER 100 EQUIP CNTGNCY	(9) DEPOT MAINT ALW PER 100 EQUIP	(10) ILLUSTRATION	
							(A) 1-20	(B) 21-50	(C) 51-100	(A) 1-20	(B) 21-50	(C) 51-100			(A) FIG NO	(B) ITEM NO
	(A)SOURCE (B)MAINT (C)RECOV			TRIPOD, M15 6543811												
C	P-	F-	5340-764-6696	STRAP, WEBBING MILDEW RESISTANT 16 INCHES L, 3/4 INCH W, W/STL CRM PLD BUCKLE 7646696 (19200)	EA	1	1	1	2	1	1	2	24	10	9	1
C	P-	F-	5305-282-2033	THUMBSCREW CRES 1/2-20 UNF THD, 9/16 1 7575962 (19200)	EA	1	*	1	1	*	1	1	12	6	9	2
N	A-	F-		CRADLE, ASSEMBLY 7669716 (19200)		1									9	3
N	A-	F-		COLLAR, ASSEMBLY 7635320 (19200)		1									9	4
N	P-	F-	5305-054-6666	SCREW MACHINE PNH CROSS-REC, CRES PSVT, NO 8-32UNC-2A, 1/2 1 MS51957-41 (96906)	EA	1	1	1	2	1	1	2	24	10	9	5
C	P-	F-	6650-536-5459	FORK STL, 3/8 W, 7/8 L, 1 HOLE 7575961 (19200)	EA	1	*	1	1	*	1	1	12	4	9	6
N	P-	F-	5305-105-9949	THUMBSCREW CRES, 5/16-24 UNF, .436 1 7575959 (19200)	EA	1	1	1	2	1	1	2	24	10	9	7
C	P-	F-	6650-536-5458	COLLAR, SHAFT CRES, PSVT, 0.626 BORE DIA, 7/16 W, 1-1/8 OD W 2 THD HOLES, CHAM ENDS 7575960 (19200)	EA	1	*	1	1	*	1	1	12	4	9	8
N	A-	F-		LEG ASSEMBLY 7669717 (19200)		1									9	9

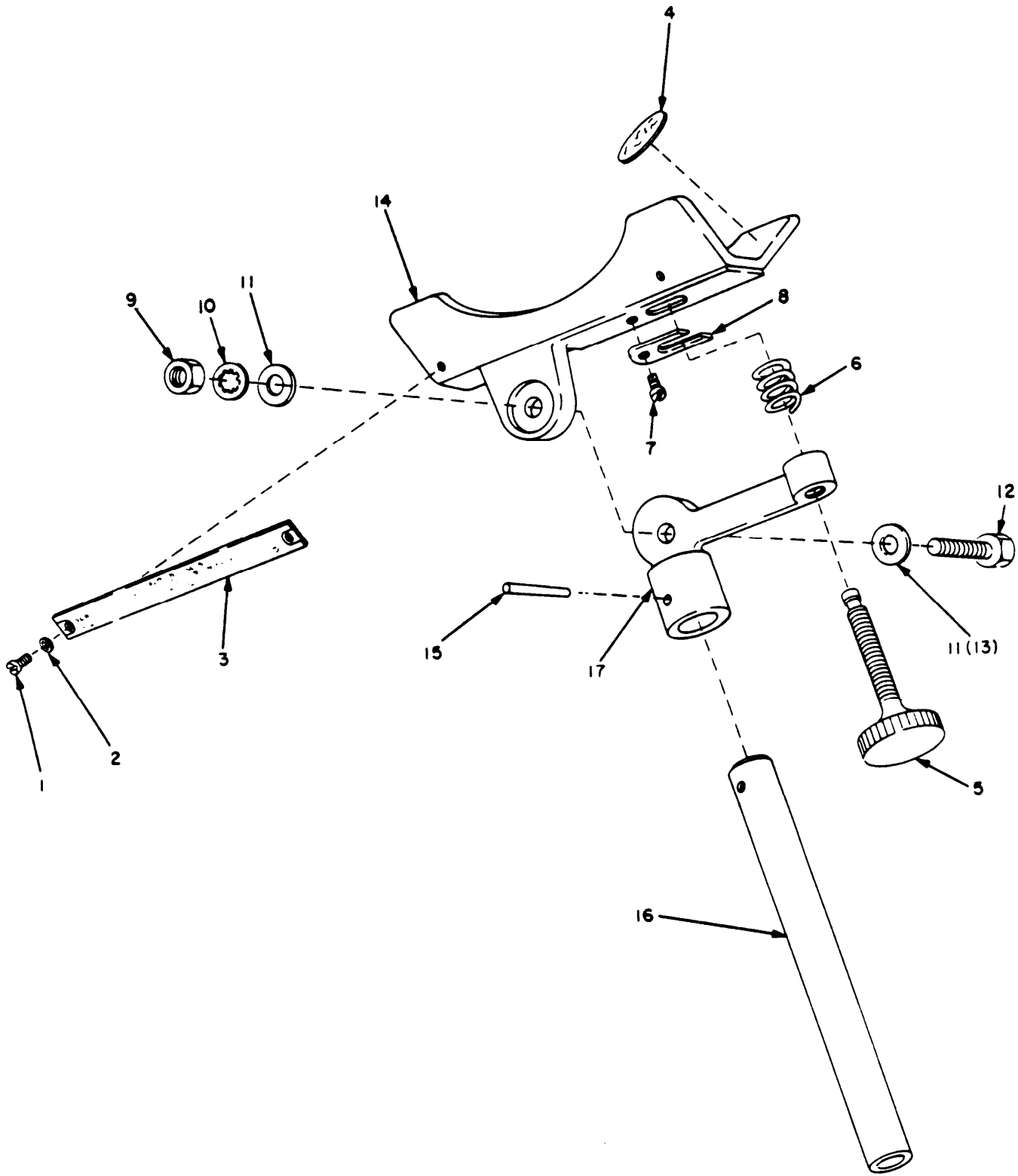
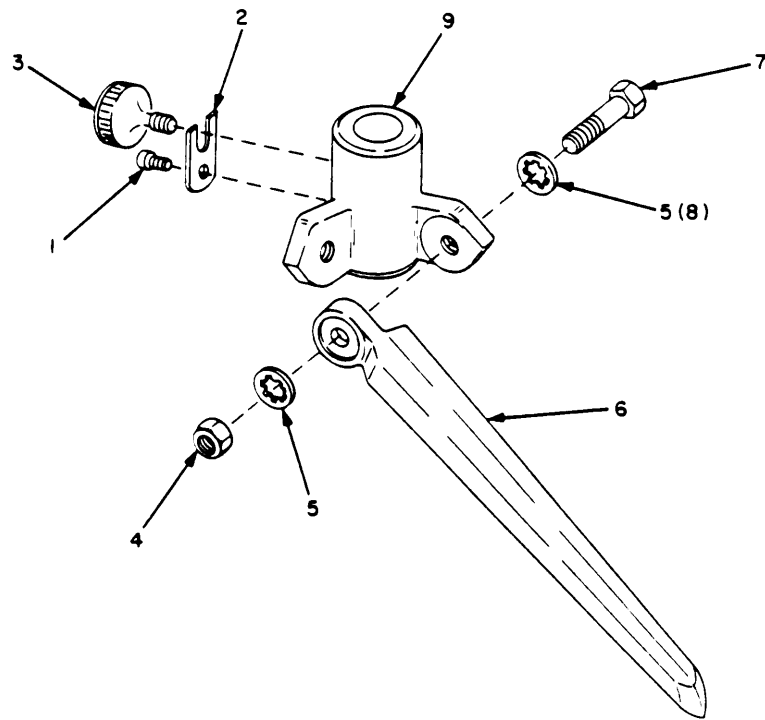


Figure 10. Cradle assembly

WE 53983

ACT ON CODE	(1) SMR RECOV CODE	(2) FEDERAL STOCK NO	(3) DESCRIPTION	(4) USABLE ON CODE	(5) UNIT OF MEAS	(6) 30-DAY MAINT ALLOWANCE			(7) 30-DAY GS MAINT ALLOWANCE			(8) 1- YR ALW PER 100 EQUIP CNTGNCY	(9) DEPOT MAIN ALW PER 100 EQUIP	(10) ILLUSTRATION		
						(A) 1-20	(B) 21-50	(C) 51-100	(A) 1-20	(B) 21-50	(C) 51-100			(A) FIG NO	(B) ITEM NO	
	(A)SOURCE (B)MAINT (C)RECOV		CRADLE ASSEMBLY 7669716													
N	P-	F-	5305-054-5644	EA	2	1	1	2	1	1	2	24	10	10	1	
			SCREW MACHINE PNH CROSS REC, CRES, NO 4-40NC-2A, 1/81 MS51957-11 (96906)													
N	P-	F-	5310-550-3715	EA	2	1	1	2	1	1	2	24	10	10	2	
			WASHER, LOCK CRES, UNCTD, .112 ID, .255 OD, .015 THK MS35333-70 (96906)													
N	P-	D-	9905-497-8274	EA	1	5								10	3	
			PLATE, IDENTIFICATION 11731260 (19200)													
N	P-	F-	6650-455-1472	EA	4	2	3	5	2	3	5	60	40	10	4	
			PAD 7575954 (19200)													
C	P-	F-	5305-207-1957	EA	1	1	1	2	1	1	2	24	10	10	5	
			THUMBSCREW KNURLED NO 1 HD, 3/8-24UNF-2A 1 1/21 500 DIA 7575956 (19200)													
C	P-	F-	5340-597-2020	EA	1	1	1	2	1	1	2	24	10	10	6	
			SPRING, COMPRESSION 7575955 (19200)													
N	P-	F-	5305-054-6668	EA	1	1	2	3	1	2	3	36	20	10	7	
			SCREW, MACHINE PNH, CROSS-REC, CRES, NO 8-32NC-2A, 3/8 1 MS51957-43 (96906)													
C	P-	F-	1240-757-5953	EA	1	*	1	1	*	1	1	12	4	10	8	
			FORK STL, 3/8 W, 7/8 1 7575953 (19200)													
N	P-	F-	5310-767-0445	EA	4	1	1	2	1	1	2	24	10	10	9	
			NUT, PLAIN, HEXAGON CRES, UNCTD, 5/16-18UNC-2B, .489 W, .258 H MS51971-2 (96906)													
N	P-	F-	5310-178-8631	EA	1	1	2	3	1	2	3	36	20	10	10	
			WASHER, LOCK FL INTL T, CRES, PSVT, FNSH 0.332 ID, 0.610 OD, 0.34 THK MS35333-75 (96906)													
N	P-	F-	5310-625-5756	EA	2	1	2	3	1	2	3	36	20	10	11	
			WASHER, FLAT RND, CRES, UNCTD, 5/16 ID, .687 OD, .051 THK MS15795-812 (96906)													

ACT ON CODE	(1) SMR RECOV CODE	(2) FEDERAL STOCK NO	(3) DESCRIPTION	(4) UNIT OF MEAS	(5) QTY IN UNIT	(6) 30-DAY DS MAINT ALLOWANCE			(7) 30-DAY GS MAINT ALLOWANCE			(8) 1- YR ALW PER 100 EQUIP CNTGCV	(9) DEPOT MAINT ALW PER 100 EQUIP	(10) ILLUSTRATION		
						(A)	(B)	(C)	(A)	(B)	(C)			(A) FIG NO	(B) ITEM NO	
	(A)SOURCE (B)MAINT (C)RECOV		REFERENCE NUMBER & MFR CODE	USABLE ON CODE												
N	P-	F-	5306-543-4405	EA	1	1	1	2	1	1	2	24	10	10	12	
			BOLT, MACHINE HEX HD, CRES PSVT FN 5/16-18UNC-2A, 1-1/41 MS35307-334 (96906)													
N	X2-	F-	6650-472-4446	EA	1									10	14	
			CRADLE 7669718 (19200)													
C	P-	F-	5315-188-0206	EA	1	1	1	2	1	1	2	24	10	10	15	
			PIN, TAPERED, PLAIN CRES, 1 INCH 1, .156 DIA MS24692-159 (96906)													
C	P-	F-	1240-757-5957	EA	1	*	1	1	*	1	1	12	6	10	16	
			TUBE STL, 5/8 OD, 6-1/8 1, 7575957 (19200)													
C	P-	F-	1210-763-5203	EA	1	*	1	1	*	1	1	12	2	10	17	
			ARM, CRADLE 7635203 (19200)													



WE 53984

Figure 11. Leg assembly

ACT ON CODE	SMR RECOV CODE	(1)	(2) FEDERAL STOCK NO	(3) DESCRIPTION	(4) UNIT OF MEAS	(5) QTY IN UNIT	(6) 30-DAY MAINT ALLOWANCE			(7) 30-DAY GS MAINT ALLOWANCE			(8) 1- YR ALW PER 100 EQUIP CNTGCTY	(9) DEPOT MAINT ALW PER 100 EQUIP	(10) ILLUSTRATION	
							(A) 1-20	(B) 21-50	(C) 51-100	(A) 1-20	(B) 21-50	(C) 51-100			(A) FIG NO	(B) ITEM NO
				LEG ASSEMBLY 7669717												
N	P-	F-	5305-054-6666	SCREW MS51957-41 (96906)	EA	1	REF	REF	REF	REF	REF	REF		REF	11	1
C	P-	F-	1240-757-5958	FORK STL 3/8 W. 7/8 1 7575958 (19200)	EA	1	*	1	1	*	1	1	12	5	11	2
N	P-	F-	5305-105-9949	THUMBSCREW 7575959 (19200)	EA	1	REF	REF	REF	REF	REF	REF		REF	11	3
N	P-	F-	5310-767-0445	NUT, HEXAGON MS51971-1 (96906)	EA	3	REF	REF	REF	REF	REF	REF		REF	11	4
N	P-	F-	5310-178-8631	WASHER, LOCK MS35333-75 (96906)	EA	6	REF	REF	REF	REF	REF	REF		REF	11	5
C	P-	F-	1240-763-5205	LEG, TRIPOD AL, 13/16 W, 8-1/2 1 7635205 (19200)	EA	3	1	1	2	1	1	2	24	10	11	6
N	P-	F-	5306-543-4405	BOLT, MACHINE MS35307-334 (96906)	EA	3	REF	REF	REF	REF	REF	REF		REF	11	7
N	P-	F-	6650-455-1470	HEAD 7635204 (19200)	EA	1	*	1	1	*	1	1	12	4	11	9

SECTION IV. INDEX-FEDERAL STOCK NUMBER AND REFERENCE NUMBER

CROSS-REFERENCED TO FIGURE AND ITEM NUMBER

STOCK NUMBER	FIGURE NO.	ITEM NO.				
1240-531-6906	4	4	6650-618-0726	6	4	
1240-531-7065	4	1	6650-618-0759	4	5	
1240-531-7095	6	3	6658-871-2970	8	3	
1240-654-3811	8	1	9905-497-8274	10	3	
1240-757-5953	10	8				
1240-757-5957	10	16				
1240-757-5958	11	2				
1240-763-5203	10	17				
1240-763-5205	11	6	MS15795-812	96906	10	11
5305-022-4683	6	1	MS21318-7	96906	2	9
5305-054-5644	10	1	MS24692.159	96906	10	15
5305-054-6666	9	5	MS35307-334	96906	10	12
5305-054-6666	11	1	MS35307-334	96906	11	7
5305-054-6668	10	7	MS35333-70	96906	10	2
5305-054-6670	5	4	MS35333-75	96906	10	10
5305-105-9949	9	7	MS35333-75	96906	11	5
5305-105-9949	11	3	MS51957-11	96906	10	1
5305-207-1957	10	5	MS51957-41	96906	9	5
5305-207-8849	5	3	MS51957-41	96906	11	1
5305-207-8851	5	1	MS51957-43	96906	10	7
5305-253-5606	2	9	MS51957-45	96906	5	4
5305-282-2033	9	2	MS51959-4	96906	3	1
5305-282-7668	2	2	MS51971-2	96906	10	9
5305-764-2964	3	1	MS51971-2	96906	11	4
5306-543-4405	10	12	11731260	19200	10	3
5306-543-4405	11	7	224683	00000	6	1
5310-178-8631	10	10	5316096	19200	4	4
5310-178-8631	11	5	5316907	19200	4	2
5310-208-3434	3	4	5316908	19200	7	2
5310-550-3715	10	2	5317040	19200	2	5
5310-625-5726	10	11	5317041	19200	2	6
5310-767-0445	10	9	5317042	19200	2	7
5310-767-0445	11	4	5317039	19200	2	1
5315-188-0206	10	15	5317062	19200	7	1
5330-297-5627	5	2	5317063	19200	7	3
5340-531-7094	6	2	5317065	19200	4	1
5340-561-0313	8	4	5317066	19200	4	3
5340-597-2020	10	6	5317068	19200	3	5
5340-597-8877	7	1	5317069	00000	3	4
5340-597-8878	2	7	5317070	19200	3	6
5340-764-6696	9	1	5317071	19200	3	3
6650-205-0910	2	10	5317091	00000	5	1
6650-472-4446	10	14	5317092	00000	5	2
6650-455-1470	11	9	5317093	00000	5	3
6650-455-1472	10	4	5317094	00000	6	2
6650-531-6907	4	2	5317095	19200	6	3
6650-531-6908	7	2	540977	21450	2	2
6650-531-7039	2	1	5630787	19200	2	3
6650-531-7041	2	6	5630788	19200	2	4
6650-531-7063	7	3	5630789	19200	5	6
6650-531-7066	4	3	5630797	19200	5	5
6650-531-7068	3	5	5630798	19200	6	9
6650-531-7070	3	6	6180726	19200	6	4
6650-531-7071	3	3	6180756	19200	2	8
6650-536-5458	9	8	6180758	19200	3	2
6650-536-5459	9	6	6180759	19200	4	5
6650-563-0798	6	9	6543811	19200	8	1

7575953	19200	10	8	7635203	19200	10	17
7575954	19200	10	4	7635204	19200	11	9
7575955	19200	10	6	7635205	19200	11	6
7575956	19200	10	5	7635320	19200	9	4
7575957	19200	10	16	7644089	19200	8	4
7575958	19200	11	2	7646696	19200	9	1
7575959	19200	9	,7	7669716	19200	9	3
7575959	19200	11	3	7669717	19200	9	9
7575960	19200	9	8	7669718	19200	10	14
7575961	19200	9	6	8244518	19200	8	2
7575962	19200	9	2	8270828	19200	8	3
7579624	19200	2	10				

By Order of the Secretary of the Army:

Official:

VERNE L. BOWERS
Major General, United States Army
The Adjutant General.

W. C. WESTMORELAND
General, United States Army
Chief of Staff

RECOMMENDED CHANGES TO EQUIPMENT TECHNICAL PUBLICATIONS



THEN...JOT DOWN THE DOPE ABOUT IT ON THIS FORM. CAREFULLY TEAR IT OUT, FOLD IT AND DROP IT IN THE MAIL.

SOMETHING WRONG WITH PUBLICATION

FROM: (PRINT YOUR UNIT'S COMPLETE ADDRESS)

DATE SENT

PUBLICATION NUMBER

PUBLICATION DATE

PUBLICATION TITLE

BE EXACT PIN-POINT WHERE IT IS

PAGE NO.

PARA-GRAPH

FIGURE NO.

TABLE NO.

IN THIS SPACE, TELL WHAT IS WRONG AND WHAT SHOULD BE DONE ABOUT IT.

TEAR ALONG PERFORATED LINE

PRINTED NAME, GRADE OR TITLE AND TELEPHONE NUMBER

SIGN HERE

The Metric System and Equivalents

Linear Measure

1 centimeter = 10 millimeters = .39 inch
 1 decimeter = 10 centimeters = 3.94 inches
 1 meter = 10 decimeters = 39.37 inches
 1 dekameter = 10 meters = 32.8 feet
 1 hectometer = 10 dekameters = 328.08 feet
 1 kilometer = 10 hectometers = 3,280.8 feet

Weights

1 centigram = 10 milligrams = .15 grain
 1 decigram = 10 centigrams = 1.54 grains
 1 gram = 10 decigrams = .035 ounce
 1 dekagram = 10 grams = .35 ounce
 1 hectogram = 10 dekagrams = 3.52 ounces
 1 kilogram = 10 hectograms = 2.2 pounds
 1 quintal = 100 kilograms = 220.46 pounds
 1 metric ton = 10 quintals = 1.1 short tons

Liquid Measure

1 centiliter = 10 milliliters = .34 fl. ounce
 1 deciliter = 10 centiliters = 3.38 fl. ounces
 1 liter = 10 deciliters = 33.81 fl. ounces
 1 dekaliter = 10 liters = 2.64 gallons
 1 hectoliter = 10 dekaliters = 26.42 gallons
 1 kiloliter = 10 hectoliters = 264.18 gallons

Square Measure

1 sq. centimeter = 100 sq. millimeters = .155 sq. inch
 1 sq. decimeter = 100 sq. centimeters = 15.5 sq. inches
 1 sq. meter (centare) = 100 sq. decimeters = 10.76 sq. feet
 1 sq. dekameter (are) = 100 sq. meters = 1,076.4 sq. feet
 1 sq. hectometer (hectare) = 100 sq. dekameters = 2.47 acres
 1 sq. kilometer = 100 sq. hectometers = .386 sq. mile

Cubic Measure

1 cu. centimeter = 1000 cu. millimeters = .06 cu. inch
 1 cu. decimeter = 1000 cu. centimeters = 61.02 cu. inches
 1 cu. meter = 1000 cu. decimeters = 35.31 cu. feet

Approximate Conversion Factors

To change	To	Multiply by	To change	To	Multiply by
inches	centimeters	2.540	ounce-inches	newton-meters	.007062
feet	meters	.305	centimeters	inches	.394
yards	meters	.914	meters	feet	3.280
miles	kilometers	1.609	meters	yards	1.094
square inches	square centimeters	6.451	kilometers	miles	.621
square feet	square meters	.093	square centimeters	square inches	.155
square yards	square meters	.836	square meters	square feet	10.764
square miles	square kilometers	2.590	square meters	square yards	1.196
acres	square hectometers	.405	square kilometers	square miles	.386
cubic feet	cubic meters	.028	square hectometers	acres	2.471
cubic yards	cubic meters	.765	cubic meters	cubic feet	35.315
fluid ounces	milliliters	29.573	cubic meters	cubic yards	1.308
pints	liters	.473	milliliters	fluid ounces	.034
quarts	liters	.946	liters	pints	2.113
gallons	liters	3.785	liters	quarts	1.057
ounces	grams	28.349	liters	gallons	.264
pounds	kilograms	.454	grams	ounces	.035
short tons	metric tons	.907	kilograms	pounds	2.205
pound-feet	newton-meters	1.356	metric tons	short tons	1.102
pound-inches	newton-meters	.11296			

Temperature (Exact)

°F	Fahrenheit	5/9 (after	Celsius	°C
	temperature	subtracting 32)	temperature	

PIN: 028028-000